

The journey to a more reliable, feature-rich all-IP network

The nationwide withdrawal of the entire BT Openreach public switched telephone network (PSTN) is already happening.

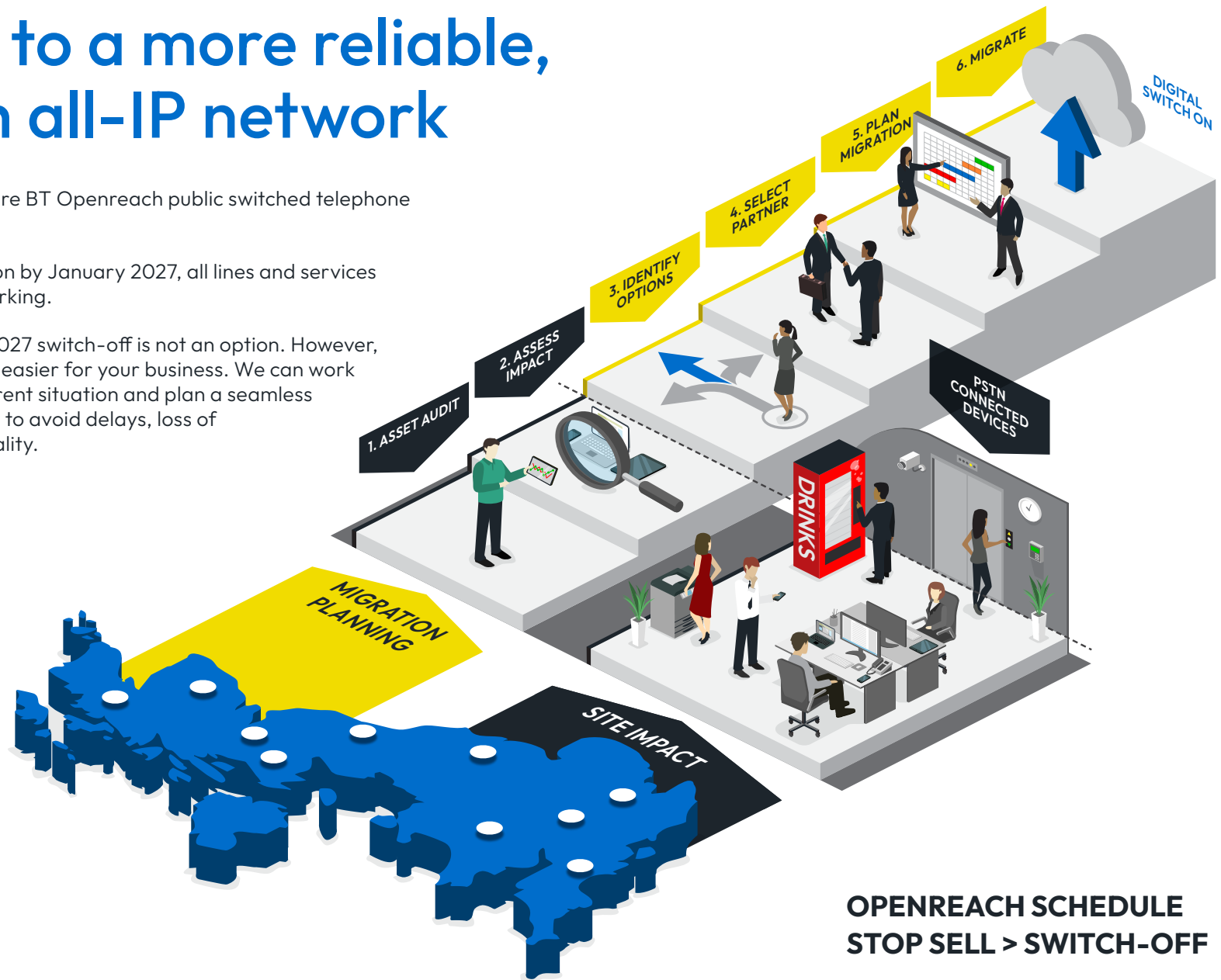
If you don't migrate to an all-IP solution by January 2027, all lines and services reliant on PSTN and ISDN will stop working.

Doing nothing and opting out of the 2027 switch-off is not an option. However, Wavenet can make this process much easier for your business. We can work alongside you to understand your current situation and plan a seamless migration to new technology. Act now to avoid delays, loss of service and to enhance your functionality.

**WLR
SWITCH-OFF
2027**

KEY CRITERIA

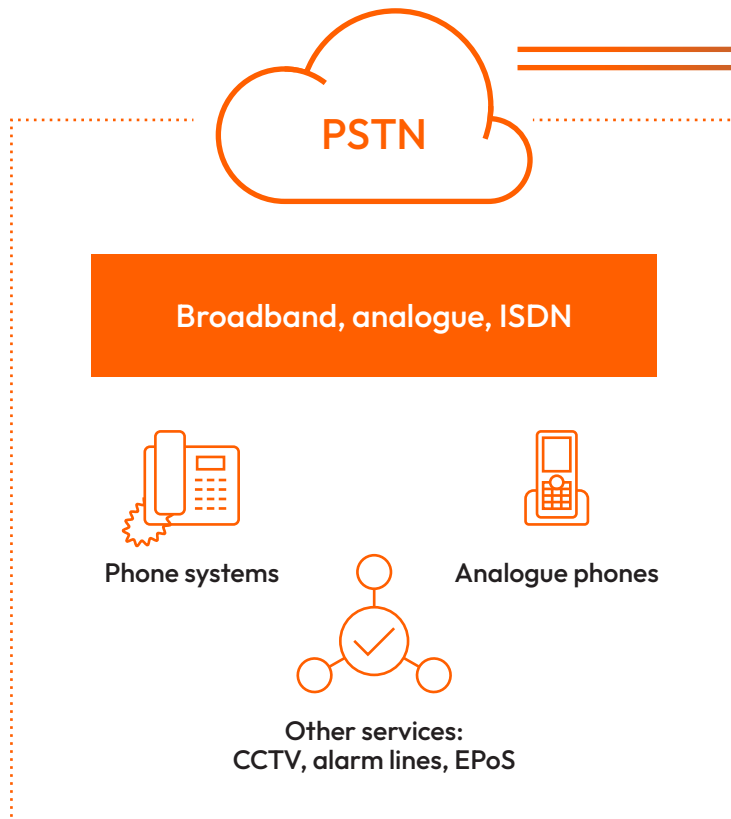
- Age and reliability
- Digital potential
- PSTN reliance
- Performance
- Dependency
- Security



Drive operating efficiency, productivity and collaboration with high speed digital connectivity.

TODAY

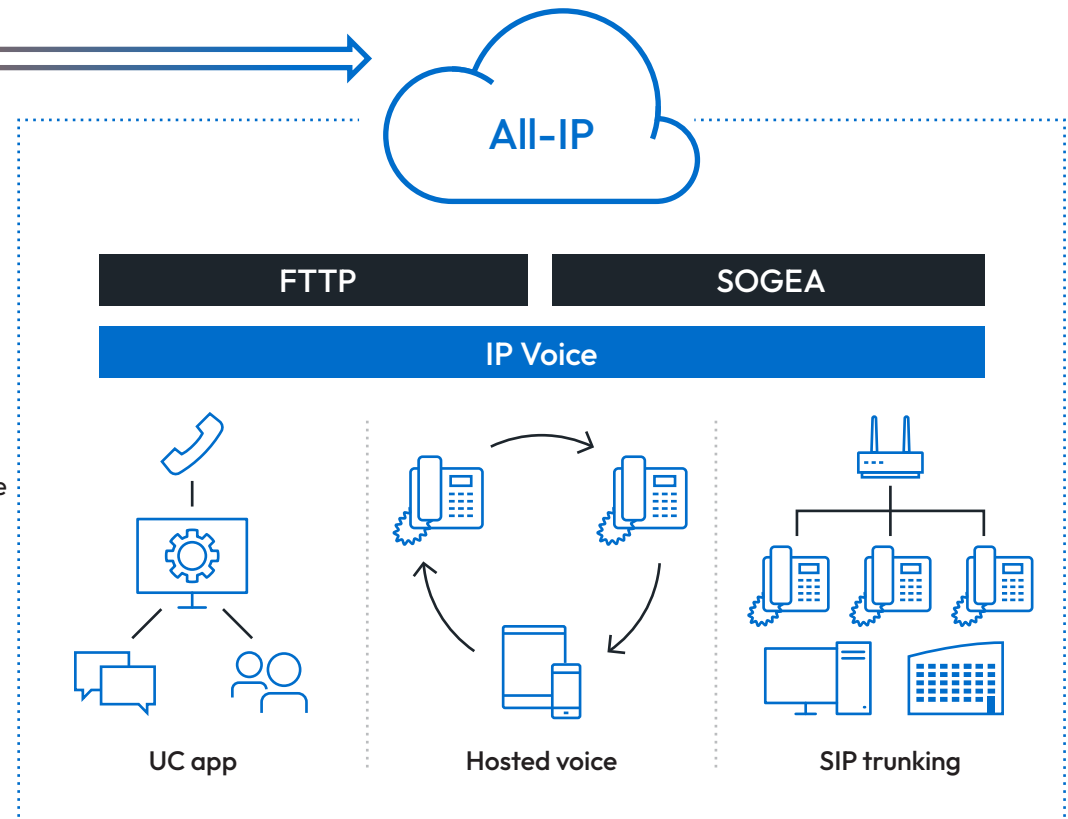
Customers buy a voice line and add broadband on top.



Broadband customers can expect savings when voicelines are not required.

FUTURE

Customers buy an IP access line and we will add voice and other services on top. The new services are faster, highly scalable and resilient.



The first step is to identify and review your current WLR estate, which our Asset Audit can do for you.

To find out more about the Asset Audit speak to one of our specialists: T: 0344 863 3000 | E: enquiries@wavenet.co.uk